

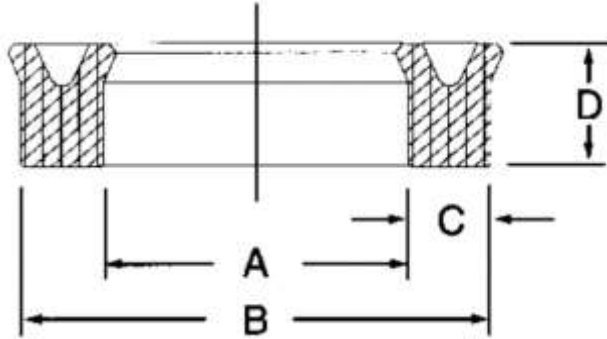


**Pressure Seals, Inc.**

Phone: (877)-PSI-SEAL Toll Free  
Thousands of Seals, O-Rings, and U-Cups  
World-Class Service since 1976!



## Metric Urethane Symmetrical U-Cups



MA25 series metric urethane u-cups are symmetrical in design and may be used as rod or piston seals. Back-beveled knife-trimmed lips ensure a good seal with minimal friction.

Part Number					Part Number				
Prefix	Inside Diameter A (mm)		Outside Diameter B (mm)	Height D (mm)	Prefix	Inside Diameter A (mm)		Outside Diameter B (mm)	Height D (mm)
MA25 -	5	X	12	5.5	MA25 -	28	X	38	5.6
MA25 -	10	X	18	6	MA25 -	28	X	40	10
MA25 -	10	X	20	8	MA25 -	28	X	43	10
MA25 -	12	X	20	4.4	MA25 -	30	X	40	5.6
MA25 -	12	X	25	8	MA25 -	30	X	40	6
MA25 -	14	X	22	4.4	MA25 -	30	X	40	10
MA25 -	14	X	22	5	MA25 -	30	X	45	10
MA25 -	14	X	24	8	MA25 -	32	X	42	5.6
MA25 -	15	X	25	7.27	MA25 -	32	X	42	10
MA25 -	15	X	25	8	MA25 -	35	X	45	6
MA25 -	16	X	24	4.4	MA25 -	35	X	48	10
MA25 -	16	X	24	5	MA25 -	35	X	50	10
MA25 -	16	X	26	8	MA25 -	36	X	46	5.6
MA25 -	18	X	26	4.4	MA25 -	38	X	48	6
MA25 -	18	X	26	5	MA25 -	38	X	55	9.7
MA25 -	18	X	28	7.27	MA25 -	40	X	50	5.6
MA25 -	18	X	28	8	MA25 -	40	X	50	6
MA25 -	20	X	28	4.4	MA25 -	40	X	50	10
MA25 -	20	X	28	5	MA25 -	40	X	55	9.9
MA25 -	20	X	30	8	MA25 -	40	X	55	10
MA25 -	22	X	30	4.4	MA25 -	45	X	55	5.6
MA25 -	25	X	33	4.4	MA25 -	45	X	55	6
MA25 -	25	X	33	5	MA25 -	45	X	55	10
MA25 -	25	X	35	8	MA25 -	45	X	56	7
MA25 -	25	X	35	10	MA25 -	45	X	60	10
MA25 -	25	X	40	10	MA25 -	50	X	60	5.6
MA25 -	28	X	36	6.45	MA25 -	50	X	60	6

**Pressure Seals Inc. 81 Commerce Way, South Windsor, CT 06074**

Phone: (877)-PSI-SEAL Toll Free, In CT: (860) 282-9100, Fax: (860) 282-9001



# Pressure Seals, Inc.

Phone: (877)-PSI-SEAL Toll Free  
 Thousands of Seals, O-Rings, and U-Cups  
 World-Class Service since 1976!



## Metric Urethane Symmetrical U-Cups Continued

Part Number					Part Number				
Prefix	Inside Diameter A (mm)		Outside Diameter B (mm)	Height D (mm)	Prefix	Inside Diameter A (mm)		Outside Diameter B (mm)	Height D (mm)
MA25 -	50	X	60	7.5	MA25 -	80	X	100	12
MA25 -	50	X	60	10	MA25 -	85	X	100	8.4
MA25 -	50	X	65	10	MA25 -	85	X	100	9
MA25 -	53	X	63	6	MA25 -	85	X	105	12
MA25 -	55	X	65	6	MA25 -	90	X	100	11.8
MA25 -	55	X	75	12	MA25 -	90	X	105	8.4
MA25 -	56	X	66	6	MA25 -	90	X	105	9
MA25 -	56	X	66	7.3	MA25 -	90	X	110	12
MA25 -	56	X	71	8.4	MA25 -	95	X	110	9
MA25 -	60	X	70	6	MA25 -	95	X	115	12
MA25 -	60	X	70	10	MA25 -	100	X	115	9
MA25 -	60	X	71	7	MA25 -	100	X	120	11
MA25 -	60	X	80	12	MA25 -	100	X	120	12
MA25 -	63	X	73	6	MA25 -	105	X	125	11.36
MA25 -	63	X	73	11.8	MA25 -	105	X	125	14.5
MA25 -	63	X	78	8.4	MA25 -	110	X	130	11
MA25 -	65	X	75	6	MA25 -	110	X	130	14.5
MA25 -	65	X	80	8.4	MA25 -	112	X	125	9
MA25 -	65	X	85	12	MA25 -	120	X	140	14.5
MA25 -	70	X	80	6	MA25 -	125	X	140	9
MA25 -	70	X	80	11.8	MA25 -	125	X	145	11
MA25 -	70	X	85	8.4	MA25 -	125	X	145	14.5
MA25 -	70	X	90	12	MA25 -	130	X	150	14.5
MA25 -	75	X	85	6	MA25 -	136	X	150	9
MA25 -	75	X	95	12	MA25 -	140	X	155	9
MA25 -	78	X	85	11.8	MA25 -	140	X	160	14.5
MA25 -	80	X	90	6	MA25 -	145	X	160	9
MA25 -	80	X	90	11.8	MA25 -	150	X	170	14.5
MA25 -	80	X	95	8.4					

Pressure Seals Inc. 81 Commerce Way, South Windsor, CT 06074

Phone: (877)-PSI-SEAL Toll Free, In CT: (860) 282-9100, Fax: (860) 282-9001