

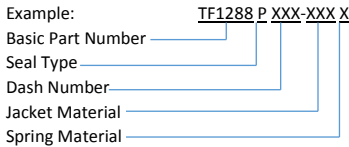


Pressure Seals, Inc.

Phone: (877)-PSI-SEAL Toll Free
Thousands of Seals, O-Rings, and U-Cups
World-Class Service since 1976!



Part Numbering System:



Jacket Material Code:

Code	Description
001	Virgin TFE
300	Polymer-filled TFE, Tetralon® 720
430	Tetralon® wear-resistant virgin TFE
490	Glass-Moly-filled TFE
600	Carbon-Graphite-filled TFE

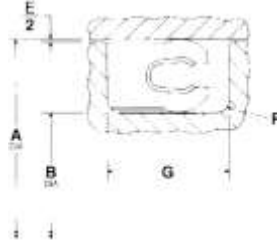
CODE IDENT. 07128

TF 1288P

SEAL INSTALLATION
O.D MOUNTED, DYNAMIC ONLY
COMMERCIAL-INDUSTRIAL STANDARD
PISTON SEALS

Spring Material Code:

Code	Description
A	301 SST
B	Inconel 718
C	Elgiloy®
D	Hastelloy C
E	304 SST
F	17-7PH SST
G	316 SST
H	302 SST



Dash No.	G	R	E
	Groove Width +.010 -.000	Groove Radius	Diametral Clearance Max.
006-012	0.094	.005-.015	0.004
013-046	0.094	.005-.015	0.005
106-129	0.141	.005-.015	0.005
130-161	0.141	.005-.015	0.006
208-270	0.188	.010-.025	0.006
316-324	0.281	.020-.035	0.006
325-378	0.281	.020-.035	0.007
401-460	0.375	.020-.035	0.010

Dash No.	A Dia.	B Dia.	Dash No.	A Dia.	B Dia.	Dash No.	A Dia.	B Dia.	Dash No.	A Dia.	B Dia.	Dash No.	A Dia.	B Dia.
	+0.01 -0.01	+0.01 -0.01		+0.01 -0.01	+0.01 -0.01		+0.01 -0.01	+0.01 -0.01		+0.01 -0.01	+0.01 -0.01			
006	0.250	0.125	040	3.000	2.875	133	2.000	1.812	213	1.187	0.937	247	4.875	4.625
007	0.281	0.156	041	3.125	3.000	134	2.062	1.875	214	1.250	1.000	248	5.000	4.750
008	0.312	0.187	042	3.375	3.250	135	2.125	1.937	215	1.312	1.062	249	5.125	4.875
009	0.343	0.218	043	3.625	3.500	136	2.187	2.000	216	1.375	1.125	250	5.250	5.000
010	0.375	0.250	044	3.875	3.750	137	2.250	2.062	217	1.437	1.187	251	5.375	5.125
011	0.437	0.312	045	4.125	4.000	138	2.312	2.125	218	1.500	1.250	252	5.500	5.250
012	0.500	0.375	046	4.375	4.250	139	2.375	2.187	219	1.562	1.312	253	5.625	5.375
013	0.562	0.437	106	0.375	0.187	140	2.437	2.250	220	1.625	1.375	254	5.750	5.500
014	0.625	0.500	107	0.406	0.219	141	2.500	2.312	221	1.687	1.437	255	5.875	5.625
015	0.687	0.562	108	0.437	0.250	142	2.562	2.375	222	1.750	1.500	256	6.000	5.750
016	0.750	0.625	109	0.500	0.312	143	2.625	2.437	223	1.875	1.625	257	6.125	5.875
017	0.812	0.687	110	0.562	0.375	144	2.687	2.500	224	2.000	1.750	258	6.250	6.000
018	0.875	0.750	111	0.625	0.437	145	2.750	2.562	225	2.125	1.875	259	6.500	6.250
019	0.937	0.812	112	0.687	0.500	146	2.812	2.625	226	2.250	2.000	260	6.750	6.500
020	1.000	0.875	113	0.750	0.562	147	2.875	2.687	227	2.375	2.125	261	7.000	6.750
021	1.062	0.937	114	0.812	0.625	148	2.937	2.750	228	2.500	2.250	262	7.250	7.000
022	1.125	1.000	115	0.875	0.687	149	3.000	2.812	229	2.625	2.375	263	7.500	7.250
023	1.187	1.062	116	0.937	0.750	150	3.062	2.875	230	2.750	2.500	264	7.750	7.500
024	1.250	1.125	117	1.000	0.812	151	3.187	3.000	231	2.875	2.625	265	8.000	7.750
025	1.312	1.187	118	1.062	0.875	152	3.437	3.250	232	3.000	2.750	266	8.250	8.000
026	1.375	1.250	119	1.125	0.937	153	3.687	3.500	233	3.125	2.875	267	8.500	8.250
027	1.437	1.312	120	1.187	1.000	154	3.937	3.750	234	3.250	3.000	268	8.750	8.500
028	1.500	1.375	121	1.250	1.062	155	4.187	4.000	235	3.375	3.125	269	9.000	8.750
029	1.625	1.500	122	1.312	1.125	156	4.437	4.250	236	3.500	3.250	270	9.250	9.000
030	1.750	1.625	123	1.375	1.187	157	4.687	4.500	237	3.625	3.375	316	1.250	0.875
031	1.875	1.750	124	1.437	1.250	158	4.937	4.750	238	3.750	3.500	317	1.312	0.937
032	2.000	1.875	125	1.500	1.312	159	5.187	5.000	239	3.875	3.625	318	1.375	1.000
033	2.125	2.000	126	1.562	1.375	160	5.437	5.250	240	4.000	3.750	319	1.437	1.062
034	2.250	2.125	127	1.625	1.437	161	5.687	5.500	241	4.125	3.875	320	1.500	1.125
035	2.375	2.250	128	1.687	1.500	208	0.875	0.625	242	4.250	4.000	321	1.562	1.187
036	2.500	2.375	129	1.750	1.562	209	0.937	0.687	243	4.375	4.125	322	1.625	1.250
037	2.625	2.500	130	1.812	1.625	210	1.000	0.750	244	4.500	4.250	323	1.687	1.312
038	2.750	2.625	131	1.875	1.687	211	1.062	0.812	245	4.625	4.375	324	1.750	1.375
039	2.875	2.750	132	1.937	1.750	212	1.125	0.875	246	4.750	4.500	325	1.875	1.500

Pressure Seals Inc. 81 Commerce Way, South Windsor, CT 06074

Phone: (877)-PSI-SEAL Toll Free, In CT: (860) 282-9100, Fax: (860) 282-9001



Pressure Seals, Inc.

Phone: (877)-PSI-SEAL Toll Free
 Thousands of Seals, O-Rings, and U-Cups
 World-Class Service since 1976!



TF 1288P continued

CODE IDENT. 07128

SEAL INSTALLATION
 O.D MOUNTED, DYNAMIC ONLY
 COMMERCIAL-INDUSTRIAL STANDARD
 PISTON SEALS

Dash No.	A		Dash No.	B		Dash No.	A		Dash No.	B		Dash No.	A		Dash No.	B	
	Dia.	Dia.		Dia.	Dia.		Dia.	Dia.		Dia.	Dia.		Dia.	Dia.		Dia.	Dia.
	+002	+001		+002	+001		+002	+001		+002	+001		+003	+001			
	-001	-002		-001	-002		-001	-002		-001	-002		-001	-003			
326	2.000	1.625	349	4.875	4.500	372	9.125	8.750	417	4.000	3.500	438	6.750	6.250			
327	2.125	1.750	350	5.000	4.625	373	9.375	9.000	418	4.125	3.625	439	7.000	6.500			
328	2.250	1.875	351	5.125	4.750	374	9.625	9.250	419	4.250	3.750	440	7.250	6.750			
329	2.375	2.000	352	5.250	4.875	375	9.875	9.500	420	4.375	3.875	441	7.500	7.000			
330	2.500	2.125	353	5.375	5.000	376	10.125	9.750	421	4.500	4.000	442	7.750	7.250			
331	2.625	2.250	354	5.500	5.125	377	10.375	10.000	422	4.625	4.125	443	8.000	7.500			
332	2.750	2.375	355	5.625	5.250	378	10.875	10.500	423	4.750	4.250	444	8.250	7.750			
333	2.875	2.500	356	5.750	5.375	401	2.000	1.500	424	4.875	4.375	445	8.500	8.000			
334	3.000	2.625	357	5.875	5.500	402	2.125	1.625	425	5.000	4.500	446	9.000	8.500			
335	3.125	2.750	358	6.000	5.625	403	2.250	1.750	426	5.125	4.625	447	9.500	9.000			
336	3.250	2.875	359	6.125	5.750	404	2.375	1.875	427	5.250	4.750	448	10.000	9.500			
337	3.375	3.000	360	6.250	5.875	405	2.500	2.000	428	5.375	4.875	449	10.500	10.000			
338	3.500	3.125	361	6.375	6.000	406	2.625	2.125	429	5.500	5.000	450	11.000	10.500			
339	3.625	3.250	362	6.625	6.250	407	2.750	2.250	430	5.625	5.125	451	11.500	11.000			
340	3.750	3.375	363	6.875	6.500	408	2.875	2.375	431	5.750	5.250	452	12.000	11.500			
341	3.875	3.500	364	7.125	6.750	409	3.000	2.500	432	5.875	5.375	453	12.500	12.000			
342	4.000	3.625	365	7.375	7.000	410	3.125	2.625	433	6.000	5.500	454	13.000	12.500			
343	4.125	3.750	366	7.625	7.250	411	3.250	2.750	434	6.125	5.625	455	13.500	13.000			
344	4.250	3.875	367	7.875	7.500	412	3.375	2.875	435	6.250	5.750	456	14.000	13.500			
345	4.375	4.000	368	8.125	7.750	413	3.500	3.000		+003	+001	457	14.500	14.000			
346	4.500	4.125	369	8.375	8.000	414	3.625	3.125		-001	-003	458	15.000	14.500			
347	4.625	4.250	370	8.625	8.250	415	3.750	3.250	436	6.375	5.875	459	15.500	15.000			
348	4.750	4.375	371	8.875	8.500	416	3.875	3.375	437	6.500	6.000	460	16.000	15.500			

Pressure Seals Inc. 81 Commerce Way, South Windsor, CT 06074

Phone: (877)-PSI-SEAL Toll Free, In CT: (860) 282-9100, Fax: (860) 282-9001



Pressure Seals, Inc.

Phone: (877)-PSI-SEAL Toll Free
Thousands of Seals, O-Rings, and U-Cups
World-Class Service since 1976!



Part Numbering System:

Example: **TF1288 R XXX-XXX X**

Basic Part Number: TF1288
Seal Type: R
Dash Number: XXX-XXX
Jacket Material: X
Spring Material: X

Jacket Material Code:

Code	Description
001	Virgin TFE
300	Polymer-filled TFE, Tetralon® 720
430	Tetralon® wear-resistant virgin TFE
490	Glass-Moly-filled TFE
600	Carbon-Graphite-filled TFE

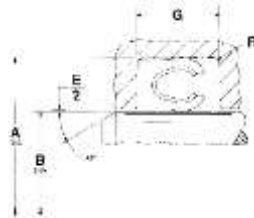
CODE IDENT. 07128

TF 1288R

ROD SEAL INSTALLATION
COMMERCIAL-INDUSTRIAL STANDARD

Spring Material Code:

Code	Description
A	301 SST
B	Inconel 718
C	Elgiloy®
D	Hastelloy C
E	304 SST
F	17-7PH SST
G	316 SST
H	302 SST



Dash No.	G Groove Width +.010 -.000	R Groove Radius	E Diametral Clearance Max.
	006-012	0.094	.005-.015
013-046	0.094	.005-.015	0.005
106-129	0.141	.005-.015	0.005
130-161	0.141	.005-.015	0.006
208-270	0.188	.010-.025	0.006
316-324	0.281	.020-.035	0.006
325-378	0.281	.020-.035	0.007
401-460	0.375	.020-.035	0.010

Dash No.	A Dia.	B Dia.	Dash No.	A Dia.	B Dia.	Dash No.	A Dia.	B Dia.	Dash No.	A Dia.	B Dia.	Dash No.	A Dia.	B Dia.
	+.001	+.001		+.001	+.001		+.001	+.001		+.001	+.001		+.001	+.001
	-.001	-.001		-.001	-.001		-.001	-.001		-.001	-.001		-.001	-.001
006	0.250	0.125	040	3.000	2.875	133	2.000	1.812	213	1.187	0.937	247	4.875	4.625
007	0.281	0.156	041	3.125	3.000	134	2.062	1.875	214	1.250	1.000	248	5.000	4.750
008	0.312	0.187	042	3.375	3.250	135	2.125	1.937	215	1.312	1.062	249	5.125	4.875
009	0.343	0.218	043	3.625	3.500	136	2.187	2.000	216	1.375	1.125	250	5.250	5.000
010	0.375	0.250	044	3.875	3.750	137	2.250	2.062	217	1.437	1.187	251	5.375	5.125
011	0.437	0.312	045	4.125	4.000	138	2.312	2.125	218	1.500	1.250	252	5.500	5.250
012	0.500	0.375	046	4.375	4.250	139	2.375	2.187	219	1.562	1.312	253	5.625	5.375
013	0.562	0.437	106	0.375	0.187	140	2.437	2.250	220	1.625	1.375	254	5.750	5.500
014	0.625	0.500	107	0.406	0.219	141	2.500	2.312	221	1.687	1.437	255	5.875	5.625
015	0.687	0.562	108	0.437	0.250	142	2.562	2.375	222	1.750	1.500	256	6.000	5.750
016	0.750	0.625	109	0.500	0.312	143	2.625	2.437	223	1.875	1.625	257	6.125	5.875
017	0.812	0.687	110	0.562	0.375	144	2.687	2.500	224	2.000	1.750	258	6.250	6.000
018	0.875	0.750	111	0.625	0.437	145	2.750	2.562	225	2.125	1.875	259	6.500	6.250
019	0.937	0.812	112	0.687	0.500	146	2.812	2.625	226	2.250	2.000	260	6.750	6.500
020	1.000	0.875	113	0.750	0.562	147	2.875	2.687	227	2.375	2.125	261	7.000	6.750
021	1.062	0.937	114	0.812	0.625	148	2.937	2.750	228	2.500	2.250	262	7.250	7.000
022	1.125	1.000	115	0.875	0.687	149	3.000	2.812	229	2.625	2.375	263	7.500	7.250
023	1.187	1.062	116	0.937	0.750	150	3.062	2.875	230	2.750	2.500	264	7.750	7.500
024	1.250	1.125	117	1.000	0.812	151	3.187	3.000	231	2.875	2.625	265	8.000	7.750
025	1.312	1.187	118	1.062	0.875	152	3.437	3.250	232	3.000	2.750	266	8.250	8.000
026	1.375	1.250	119	1.125	0.937	153	3.687	3.500	233	3.125	2.875	267	8.500	8.250
027	1.437	1.312	120	1.187	1.000	154	3.937	3.750	234	3.250	3.000	268	8.750	8.500
028	1.500	1.375	121	1.250	1.062	155	4.187	4.000	235	3.375	3.125	269	9.000	8.750
029	1.625	1.500	122	1.312	1.125	156	4.437	4.250	236	3.500	3.250	270	9.250	9.000
030	1.750	1.625	123	1.375	1.187	157	4.687	4.500	237	3.625	3.375	316	1.250	0.875
031	1.875	1.750	124	1.437	1.250	158	4.937	4.750	238	3.750	3.500	317	1.312	0.937
032	2.000	1.875	125	1.500	1.312	159	5.187	5.000	239	3.875	3.625	318	1.375	1.000
033	2.125	2.000	126	1.562	1.375	160	5.437	5.250	240	4.000	3.750	319	1.437	1.062
034	2.250	2.125	127	1.625	1.437	161	5.687	5.500	241	4.125	3.875	320	1.500	1.125
035	2.375	2.250	128	1.687	1.500	208	0.875	0.625	242	4.250	4.000	321	1.562	1.187
036	2.500	2.375	129	1.750	1.562	209	0.937	0.687	243	4.375	4.125	322	1.625	1.250
037	2.625	2.500	130	1.812	1.625	210	1.000	0.750	244	4.500	4.250	323	1.687	1.312
038	2.750	2.625	131	1.875	1.687	211	1.062	0.812	245	4.625	4.375	324	1.750	1.375
039	2.875	2.750	132	1.937	1.750	212	1.125	0.875	246	4.750	4.500	325	1.875	1.500

Pressure Seals Inc. 81 Commerce Way, South Windsor, CT 06074

Phone: (877)-PSI-SEAL Toll Free, In CT: (860) 282-9100, Fax: (860) 282-9001



Pressure Seals, Inc.

Phone: (877)-PSI-SEAL Toll Free
Thousands of Seals, O-Rings, and U-Cups
World-Class Service since 1976!



CODE IDENT. 07128

TF 1288R continued

ROD SEAL INSTALLATION
COMMERCIAL-INDUSTRIAL STANDARD

Dash No.	A Dia.	B Dia.	Dash No.	A Dia.	B Dia.	Dash No.	A Dia.	B Dia.	Dash No.	A Dia.	B Dia.	Dash No.	A Dia.	B Dia.
	+0.02	+0.01		+0.02	+0.01		+0.02	+0.01		+0.02	+0.01		+0.03	+0.01
	-0.01	-0.02		-0.01	-0.02		-0.01	-0.02		-0.01	-0.02		-0.01	-0.03
326	2.000	1.625	349	4.875	4.500	372	9.125	8.750	417	4.000	3.500	438	6.750	6.250
327	2.125	1.750	350	5.000	4.625	373	9.375	9.000	418	4.125	3.625	439	7.000	6.500
328	2.250	1.875	351	5.125	4.750	374	9.625	9.250	419	4.250	3.750	440	7.250	6.750
329	2.375	2.000	352	5.250	4.875	375	9.875	9.500	420	4.375	3.875	441	7.500	7.000
330	2.500	2.125	353	5.375	5.000	376	10.125	9.750	421	4.500	4.000	442	7.750	7.250
331	2.625	2.250	354	5.500	5.125	377	10.375	10.000	422	4.625	4.125	443	8.000	7.500
332	2.750	2.375	355	5.625	5.250	378	10.875	10.500	423	4.750	4.250	444	8.250	7.750
333	2.875	2.500	356	5.750	5.375	401	2.000	1.500	424	4.875	4.375	445	8.500	8.000
334	3.000	2.625	357	5.875	5.500	402	2.125	1.625	425	5.000	4.500	446	9.000	8.500
335	3.125	2.750	358	6.000	5.625	403	2.250	1.750	426	5.125	4.625	447	9.500	9.000
336	3.250	2.875	359	6.125	5.750	404	2.375	1.875	427	5.250	4.750	448	10.000	9.500
337	3.375	3.000	360	6.250	5.875	405	2.500	2.000	428	5.375	4.875	449	10.500	10.000
338	3.500	3.125	361	6.375	6.000	406	2.625	2.125	429	5.500	5.000	450	11.000	10.500
339	3.625	3.250	362	6.625	6.250	407	2.750	2.250	430	5.625	5.125	451	11.500	11.000
340	3.750	3.375	363	6.875	6.500	408	2.875	2.375	431	5.750	5.250	452	12.000	11.500
341	3.875	3.500	364	7.125	6.750	409	3.000	2.500	432	5.875	5.375	453	12.500	12.000
342	4.000	3.625	365	7.375	7.000	410	3.125	2.625	433	6.000	5.500	454	13.000	12.500
343	4.125	3.750	366	7.625	7.250	411	3.250	2.750	434	6.125	5.625	455	13.500	13.000
344	4.250	3.875	367	7.875	7.500	412	3.375	2.875	435	6.250	5.750	456	14.000	13.500
345	4.375	4.000	368	8.125	7.750	413	3.500	3.000		+0.03	+0.01	457	14.500	14.000
346	4.500	4.125	369	8.375	8.000	414	3.625	3.125		-0.01	-0.03	458	15.000	14.500
347	4.625	4.250	370	8.625	8.250	415	3.750	3.250	436	6.375	5.875	459	15.500	15.000
348	4.750	4.375	371	8.875	8.500	416	3.875	3.375	437	6.500	6.000	460	16.000	15.500

Pressure Seals Inc. 81 Commerce Way, South Windsor, CT 06074

Phone: (877)-PSI-SEAL Toll Free, In CT: (860) 282-9100, Fax: (860) 282-9001