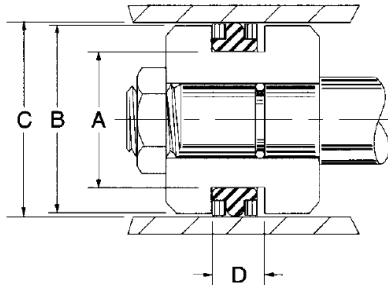


Pressure Seals, Inc.

Phone: (877)-PSI-SEAL Toll Free
 Thousands of Seals, O-Rings, and U-Cups
 World-Class Service since 1976!



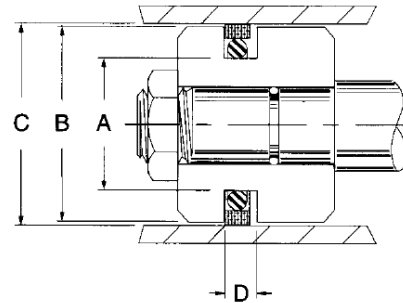
Wide Base T Seals



Wide base T-seals fit into o-ring grooves designed for 1 or 2 backup rings. TPS prefix indicates 1 backup ring groove. TPT prefix indicates 2 backup ring groove. No suffix indicates standard industrial groove. -1 suffix indicates Mil-G-5514F groove.

Part Number	Bore Dia. C +0.002 -0.000	Groove Dia A +0.002 -0.000	Groove Width D +0.010 -0.000	Price
TPT035-1	3.500	3.128	0.424	
TPT039-1	4.000	3.628	0.424	
TPT043-1	4.500	4.128	0.424	
TPS047A-1	5.001	4.524	0.475	
TPT047A-1	5.001	4.524	0.475	
TPT051-1	5.501	5.024	0.579	
TPT055-1	6.001	5.524	0.579	
TPT058-1	6.501	6.024	0.579	
TPT060-1	7.001	6.524	0.475	
TPT060-1	7.001	6.524	0.579	
TPT065-1	8.251	7.774	0.475	
TPT073-1	12.001	11.524	0.579	

AS742 Piston Seals



Our AS742 series piston seals are machined from 60% bronze filled TFE for the most severe applications. Standard expander rings on this series piston seal are round cross section high memory 70 durometer nitrile, however viton expanders are available. Consult sales for pricing and delivery.

Part Number	Bore Dia. C mm H9	Groove Dia A mm Re	Groove Width D mm +0.02 -0.0	Price
AS742E-100MMB	100	79	8.1	
AS742E-110MMB	110	89	8.1	
AS742E-120MMB	120	99	8.1	
AS742E-125MMB	125	104	8.1	
AS742E-130MMB	130	109	8.1	
AS742E-135MMB	135	114	8.1	
AS742E-140MMB	140	119	8.1	
AS742E-150MMB	150	129	8.1	
AS742E-160MMB	160	139	8.1	
AS742E-170MMB	170	149	8.1	
AS742E-180MMB	180	159	8.1	
AS742E-190MMB	190	169	8.1	
AS742E-200MMB	200	179	8.1	
AS742E-215MMB	215	194	8.1	
AS742E-225MMB	225	204	8.1	
AS742E-240MMB	240	219	8.1	
AS742E-250MMB	250	229	8.1	
AS742E-280MMB	280	259	8.1	

Pressure Seals Inc. 81 Commerce Way, South Windsor, CT 06074

Phone: (877)-PSI-SEAL Toll Free, In CT: (860) 282-9100, Fax: (860) 282-9001