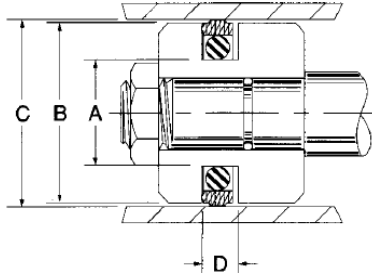


Pressure Seals, Inc.

Phone: (877)-PSI-SEAL Toll Free
Thousands of Seals, O-Rings, and U-Cups
World-Class Service since 1976!

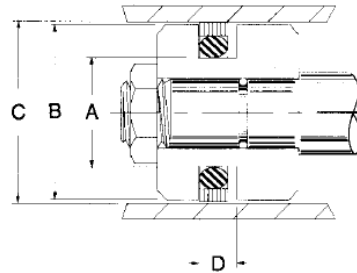


Metric Hytrel Piston Seals



These compact seal assemblies are molded from a specifically blended hybrid material and include a 70 durometer nitrile o-ring expander. They are interchangeable in many popular TFE piston seal grooves and offer easier installation and better resistance to cold flow and extrusion.

914 Piston Seals



Genuine Chem-Cast® piston rings consist of moly/glass-filled nylon step cut outer ring with a precision milled joint, together with a carboxylated nitrile 90 durometer oval expander ring. The expander ring is designed so as not to pinch between the joint of the outer ring during installation. These rings will pass a small port with no problem and can handle large diametrical applications. Many OEM's have adopted this seal due to its superior sealability, wear resistance, and port passing capabilities. Do not cut rings down for any reason.

Part Number	Bore Dia. C mm. H9	Groove Dia A mm F8	Groove Width D mm +0.2/-0	Price
AS632-25MM	25	17.5	3.2	
AS632-30MM	30	22.5	3.2	
AS632-32MM	32	24.5	3.2	
AS632-35MM	35	27.5	3.2	
AS636-40MM	40	29	4.2	
AS636-45MM	45	34	4.2	
AS636-50MM	50	39	4.2	
AS640-55MM	55	39.5	6.3	
AS636-60MM	60	49	4.2	
AS636-63MM	63	52	4.2	
AS636-65MM	65	54	4.2	
AS640-70MM	70	57	6.3	
AS636-75MM	75	64	4.2	
AS640-80MM	80	64.5	6.3	
AS640-100MM	100	84.5	6.3	
AS640-125MM	125	109.5	6.3	
AS640-130MM	130	109	8.1	
AS642-130MM	130	109	8.1	
AS642-140MM	140	119	8.1	
AS642-150MM	150	129	8.1	
AS642-160MM	160	139	8.1	
AS642-170MM	170	149	8.1	
AS642-180MM	180	159	8.1	
AS642-190MM	190	179	8.1	
AS642-200MM	200	179	8.1	
AS642-210MM	210	189	8.1	

Part Number	Outside Dia C	Height D	Price
914-2000-2003	2	X	9/32
914-2500-312	2-1/2	X	5/16
914-3000-3005	3	X	9/32
914-3000-312	3	X	5/16
914-3750-312	3-3/4	X	5/16
914-3997-4000	4	X	9/32
914-4000-312	4	X	5/16
914-4500-4505	4-1/2	X	9/32
914-5000-375	5	X	3/8
914-5525-5530	5.530	X	3/8
914-6000-375	6	X	3/8
914-6500-6505	6-1/2	X	3/8
914-7000-375	7	X	3/8
914-7000-625	7	X	5/8
914-7285-7290	7.285	X	3/8
914-7500-7505	7-1/2	X	3/8
914-7500-625	7-1/2	X	5/8
914-8000-375	8	X	3/8
914-8000-750	8	X	3/4
914-8030-375	8.030	X	3/8
914-8437-8442	8-7/16	X	3/8
914-8500-375	8.030	X	3/8
914-9000-375	9	X	3/8
914-9500-9505	9-1/2	X	3/8
914-10000-10005	10	X	3/8
914-11000-11005	11	X	3/8
914-1195-12000	12	X	3/8

Pressure Seals Inc. 81 Commerce Way, South Windsor, CT 06074

Phone: (877)-PSI-SEAL Toll Free, In CT: (860) 282-9100, Fax: (860) 282-9001