



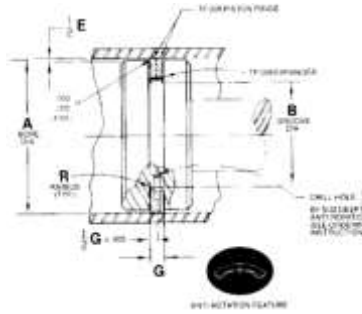
Pressure Seals, Inc.

Phone: (877)-PSI-SEAL Toll Free
Thousands of Seals, O-Rings, and U-Cups
World-Class Service since 1976!



Notes:

1. This part is supplied in virgin TFE per MIL-R-8791. For other material callouts, refer to Technical Data section.
2. Each TF 010 assembly consists of two TF 008 piston rings, one TF 009 expander and one TF 006 anti-rotation pin. Rings are to be rotated at installation so that step cuts are 180° apart.
3. Expander Material: Type 301 stainless steel per MIL-S-5059; Alternate Material: 17-7PH CRES.



CODE IDENT. 07128

TF 010

PISTON RING INSTALLATION
STANDARD FRACTIONAL BORE SIZE

Ordering Instructions:

Example: TF 010-19-T
Basic Part Number _____
Size Dash No. _____
Anti-Rotation Pin _____
(If required)

Dash No.	G Groove Width	R Groove Radius	E Diametral Clearance Max.
	+0.001 -0.001		
8-64	0.126	0.020	0.005
65-95	0.189	0.030	0.007

Dash No.	A Dia.	B Dia.	Dash No.	A Dia.	B Dia.	Dash No.	A Dia.	B Dia.
	+0.001 -0.001	+0.004 -0.004		+0.002 -0.000	+0.004 -0.004		+0.003 -0.000	+0.004 -0.004
8	0.500	0.254	37	2.312	1.880	65	4.125	3.565
9	0.562	0.316	38	2.375	1.943	66	4.250	3.690
10	0.625	0.379	39	2.437	2.005	67	4.375	3.815
11	0.687	0.441	40	2.500	2.068	68	4.500	3.940
12	0.750	0.442	41	2.562	2.130	69	4.625	4.065
13	0.812	0.504	42	2.625	2.193	70	4.750	4.190
14	0.875	0.567	43	2.687	2.255	71	4.875	4.315
15	0.937	0.629	44	2.750	2.318	72	5.000	4.440
16	1.000	0.692	45	2.812	2.380	73	5.125	4.565
17	1.062	0.754	46	2.875	2.443	74	5.250	4.690
18	1.125	0.817	47	2.937	2.505	75	5.375	4.815
19	1.187	0.879	48	3.000	2.568	76	5.500	4.940
20	1.250	0.942	49	3.062	2.630	77	5.625	5.065
21	1.312	1.004	50	3.125	2.693	78	5.750	5.190
22	1.375	1.067	51	3.187	2.755	79	5.875	5.315
23	1.437	1.005	52	3.250	2.818	80	6.000	5.440
24	1.500	1.068	53	3.312	2.880	81	6.125	5.565
25	1.562	1.130	54	3.375	2.943	82	6.250	5.690
26	1.625	1.193	55	3.437	3.005	83	6.375	5.815
27	1.687	1.255	56	3.500	3.068	84	6.500	5.940
28	1.750	1.318	57	3.562	3.130	85	6.625	6.065
29	1.812	1.380	58	3.625	3.193	86	6.750	6.190
30	1.875	1.443	59	3.687	3.255	87	6.875	6.315
31	1.937	1.505	60	3.750	3.318	88	7.000	6.440
32	2.000	1.568	61	3.812	3.380	89	7.250	6.690
33	2.062	1.630	62	3.875	3.443	90	7.500	6.940
34	2.125	1.693	63	3.937	3.505	91	7.750	7.190
35	2.187	1.755	64	4.000	3.568	92	8.000	7.440
36	2.250	1.818				93	8.500	7.940
						94	9.000	8.440
						95	9.500	8.940

Pressure Seals Inc. 81 Commerce Way, South Windsor, CT 06074

Phone: (877)-PSI-SEAL Toll Free, In CT: (860) 282-9100, Fax: (860) 282-9001