



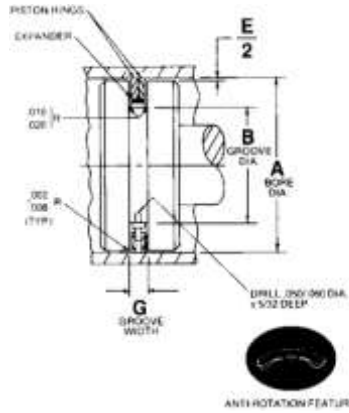
# Pressure Seals, Inc.

Phone: (877)-PSI-SEAL Toll Free  
Thousands of Seals, O-Rings, and U-Cups  
World-Class Service since 1976!



**Notes:**

1. This part is supplied in virgin TFE per MIL-R-8791. For other material callouts, refer to Technical Data section.
2. Bore dimensions conform to MIL-P-5514 C, D & E.
3. Dash numbers correspond to AS568.
4. The TF 558 series piston ring is furnished in sets consisting of two TF 559 piston rings, one TF 560 expander and one TF 006 anti-rotation pin.
5. Expander Material: Type 301 stainless steel per MIL-S-5059; Alternate Material: 17-7PH CRES.
6. For installation without anti-rotation pin, use part number TF 565 or TF 516.



CODE IDENT. 07128

## TF 558

PISTON RING INSTALLATION  
FOR MIL-P-5514  
(C, D & E REVISIONS)

Dash No.	E Diametral Clearance Max.
112-334	0.005
335-342	0.006
343-349	0.007
425 & UP	0.008

**Ordering Instructions:**

Example: TF 558-214-A  
Piston Ring Set No. \_\_\_\_\_  
Size Dash No. \_\_\_\_\_  
Alternate \_\_\_\_\_  
17-7PH Expander Material

Dash No.	A Dia.	B Dia.	G Width
	+0.002 -0.000	+0.004 -0.004	+0.001 -0.001
112	0.676	0.430	0.126
113	0.738	0.428	0.126
114	0.801	0.491	0.126
115	0.863	0.553	0.126
116	0.926	0.616	0.126
210	0.991	0.681	0.126
211	1.053	0.743	0.126
212	1.116	0.806	0.126
213	1.178	0.868	0.126
214	1.241	0.931	0.126
215	1.303	0.993	0.126
216	1.366	1.056	0.126
217	1.428	0.994	0.126
218	1.491	1.057	0.126
219	1.553	1.119	0.126
220	1.616	1.182	0.126
221	1.678	1.244	0.126
222	1.741	1.307	0.126
325	1.870	1.436	0.126
326	1.995	1.561	0.126
327	2.120	1.686	0.126
328	2.245	1.811	0.126
329	2.370	1.936	0.126

Dash No.	A Dia.	B Dia.	G Width
	+0.002 -0.000	+0.004 -0.004	+0.001 -0.001
330	2.495	2.061	0.126
331	2.620	2.186	0.126
332	2.745	2.311	0.126
333	2.870	2.436	0.126
334	2.995	2.561	0.126
335	3.120	2.686	0.126
336	3.245	2.811	0.126
337	3.369	2.935	0.126
338	3.494	3.060	0.126
339	3.619	3.185	0.126
340	3.744	3.310	0.126
341	3.869	3.435	0.126
342	3.994	3.560	0.126
343	4.119	3.559	0.126
344	4.244	3.684	0.126
345	4.369	3.809	0.126
346	4.494	3.934	0.126
347	4.619	4.059	0.126
348	4.744	4.184	0.126
349	4.869	4.309	0.126

Dash No.	A Dia.	B Dia.	G Width
	+0.003 -0.000	+0.004 -0.004	+0.001 -0.001
425	4.974	4.414	0.189
426	5.099	4.539	0.189
427	5.224	4.664	0.189
428	5.349	4.789	0.189
429	5.474	4.914	0.189
430	5.599	5.039	0.189
431	5.724	5.164	0.189
432	5.849	5.289	0.189
433	5.974	5.414	0.189
434	6.099	5.539	0.189
435	6.224	5.664	0.189
436	6.349	5.789	0.189
437	6.474	5.914	0.189
438	6.724	6.164	0.189
439	6.974	6.414	0.189
440	7.224	6.664	0.189
441	7.474	6.914	0.189
442	7.724	7.164	0.189
443	7.974	7.414	0.189
444	8.224	7.664	0.189
445	8.474	7.914	0.189
446	8.974	8.414	0.189
447	9.474	8.914	0.189

Pressure Seals Inc. 81 Commerce Way, South Windsor, CT 06074

Phone: (877)-PSI-SEAL Toll Free, In CT: (860) 282-9100, Fax: (860) 282-9001