

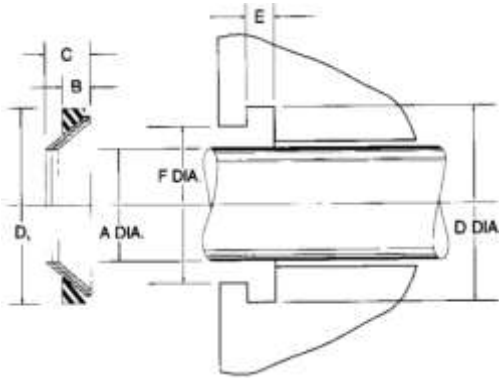


Pressure Seals, Inc.

Phone: (877)-PSI-SEAL Toll Free
Thousands of Seals, O-Rings, and U-Cups
World-Class Service since 1976!



Seal-Guard® Wipers



For heavy-duty protection against hard contaminants such as ice, mud or metal spattering, the self-adjusting Seal-Guard “scraper” is an ideal exclusion ring. Seal-Guard consists of two knife-like bronze rings and a synthetic rubber cushion ring of nitrile. To eliminate the clogging and caking of contaminants under the ring, the conically tapered bronze rings act as blades to remove and dispose of foreign matter away from the rod and ring. The notches in the bronze rings provide flexibility, allow for expansion, and produce a spring effect resulting in constant contact with the rod, full circle. When compressed the cushion ring preloads the wiper rings for wiper edge contact with the rod and it absorbs shock and side loads, therefore it’s self-adjusting. Temperature range is -40° to 250°F.

To install the Seal-Guard, cut a groove in the gland, install the bronze rings, staggering the notches. Then using a dull tool and a light film of oil, push the cushion ring into the counter bore under the retaining ring.

Part Number	Wiper Dimensions (In.)				Groove Dimensions (In.)		
	Rod Diameter A	Outside Diameter D ₁	Base Height B	Total Length C	D +0.006 -0.000	E +0.003 -0.001	F +0.010 -0.000
S-34-8	0.250	1/2	1/8	3/16	0.500	0.125	0.470
S-34-9	0.312	9/16	1/8	3/16	0.562	0.125	0.532
S-34-10	0.375	5/8	1/8	3/16	0.625	0.125	0.595
S-34-12	0.500	3/4	1/8	3/16	0.750	0.125	0.720
S-34-13	0.562	13/16	1/8	3/16	0.812	0.125	0.782
S-34-14	0.625	7/8	1/8	3/16	0.875	0.125	0.845
3435-.750	0.750	1	1/8	3/16	1.000	0.125	0.970
S-34-16	0.750	1 1/8	3/16	9/32	1.126	0.188	1.082
3436-.812	0.812	1 1/16	3/16	9/32	1.188	0.188	1.144
S-34-18	0.875	1 1/4	3/16	9/32	1.251	0.188	1.207
S-34-19	0.937	1 5/16	3/16	9/32	1.313	0.188	1.269
S-34-20	1.000	1 3/8	3/16	9/32	1.376	0.188	1.332
3435-1	1.000	1 1/4	1/8	3/16	1.250	0.125	1.220
S-34-21	1.062	1 7/16	3/16	9/32	1.438	0.188	1.394
S-34-22	1.125	1 1/2	3/16	9/32	1.501	0.188	1.457
S-34-24	1.250	1 5/8	3/16	9/32	1.626	0.188	1.582
S-34-26	1.375	1 3/4	3/16	9/32	1.751	0.188	1.707
S-34-27	1.500	1 7/8	3/16	9/32	1.876	0.188	1.832

Pressure Seals Inc. 81 Commerce Way, South Windsor, CT 06074

Phone: (877)-PSI-SEAL Toll Free, In CT: (860) 282-9100, Fax: (860) 282-9001



Pressure Seals, Inc.

Phone: (877)-PSI-SEAL Toll Free
 Thousands of Seals, O-Rings, and U-Cups
 World-Class Service since 1976!



Seal-Guard® Wipers Continued

Part Number	Wiper Dimensions (In.)				Groove Dimensions (In.)		
	Rod Diameter A	Outside Diameter D ₁	Base Height B	Total Length C	D +.006 -.000	E +.003 -.001	F +.010 -.000
S-34-28	1.625	2	3/16	9/32	2.000	0.188	1.957
S-34-29	1.750	2 1/8	3/16	9/32	2.126	0.188	2.082
S-34-30	1.875	2 1/4	3/16	9/32	2.251	0.188	2.207
3436-1.937	1.937	2 5/16	3/16	9/32	2.313	0.188	2.269
3436-2	2.000	2 3/8	3/16	9/32	2.376	0.188	2.332
S-34-31	2.000	2 1/2	1/4	3/8	2.500	0.250	2.440
S-34-32	2.125	2 5/8	1/4	3/8	2.625	0.250	2.565
S-34-33	2.250	2 3/4	1/4	3/8	2.750	0.250	2.690
S-34-34	2.375	2 7/8	1/4	3/8	2.875	0.250	2.815
S-34-35	2.500	3	1/4	3/8	3.000	0.250	2.940
3436-2.500	2.500	2 7/8	3/16	9/32	2.876	0.188	2.832
S-34-38	2.750	3 1/4	1/4	3/8	3.250	0.250	3.190
S-34-40	3.000	3 1/2	1/4	3/8	3.500	0.250	3.440
S-34-42	3.250	3 3/4	1/4	3/8	3.750	0.250	3.690
S-34-44	3.500	4	1/4	3/8	4.000	0.250	3.940
S-34-49	4.000	4 1/2	1/4	3/8	4.500	0.250	4.440
S-34-50	4.250	4 3/4	1/4	3/8	4.750	0.250	4.690
S-34-51	4.500	5 1/4	3/8	9/16	5.250	0.375	5.160
S-34-52	4.750	5 1/2	3/8	9/16	5.500	0.375	5.410
S-34-53	5.000	5 3/4	3/8	9/16	5.750	0.375	5.660
S-34-54	5.250	6	3/8	9/16	6.000	0.375	5.910
S-34-55	5.500	6 1/4	3/8	9/16	6.250	0.375	6.160
S-34-57	5.750	6 1/2	3/8	9/16	6.500	0.375	6.410
S-34-58	6.000	6 3/4	3/8	9/16	6.750	0.375	6.660
S-34-59	6.250	7	3/8	9/16	7.000	0.375	6.910
S-34-60	6.500	7 1/4	3/8	9/16	7.250	0.375	7.160
S-34-61	6.750	7 1/2	3/8	9/16	7.500	0.375	7.410
S-34-62	7.000	7 3/4	3/8	9/16	7.750	0.375	7.660
S-34-63	7.250	8	3/8	9/16	8.000	0.375	7.910
S-34-64	7.500	8 1/4	3/8	9/16	8.250	0.375	8.160
S-34-65	7.750	8 1/2	3/8	9/16	8.500	0.375	8.410
S-34-66	8.000	8 3/4	3/8	9/16	8.750	0.375	8.660

Pressure Seals Inc. 81 Commerce Way, South Windsor, CT 06074

Phone: (877)-PSI-SEAL Toll Free, In CT: (860) 282-9100, Fax: (860) 282-9001