

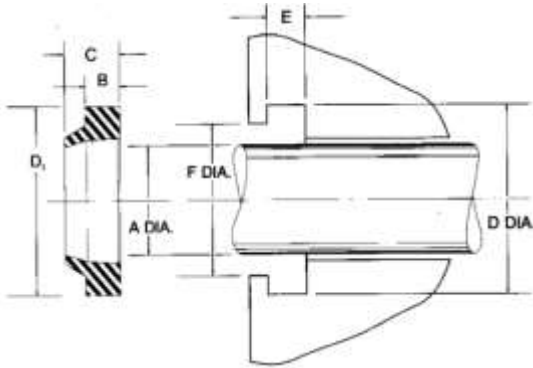


**Pressure Seals, Inc.**

Phone: (877)-PSI-SEAL Toll Free  
Thousands of Seals, O-Rings, and U-Cups  
World-Class Service since 1976!



## A40 Type Metric Nitrile Wipers



Profile A40 wipers are manufactured from 90 durometer nitrile as standard, but may also be available from stock in 90 durometer urethane. These rings can easily be snapped into grooves of relatively simple design. No close tolerances are needed.

Part Number							Groove Dimensions		
Prefix	Rod Diameter A (mm)		Outside Diameter D <sub>1</sub> (mm)		Base Height B (mm)	Total Height C (mm)	D (mm) H11	E (mm) +.1/-0	F (mm) H11
A40 -	20	X	28	X	5	7	28.6	5.3	23
A40 -	22	X	30	X	5	7	30.6	5.3	25
A40 -	25	X	33	X	5	7	33.6	5.3	28
A40 -	28	X	36	X	5	7	36.6	5.3	31
A40 -	30	X	38	X	5	7	38.6	5.3	33
A40 -	32	X	40	X	5	7	40.6	5.3	35
A40 -	35	X	43	X	5	7	43.6	5.3	38
A40 -	36	X	44	X	5	7	44.6	5.3	39
A40 -	40	X	48	X	5	7	48.6	5.3	43
A40 -	45	X	53	X	5	7	53.6	5.3	48
A40 -	45	X	55	X	5	7	55.6	5.3	52.6
A40 -	46	X	54	X	5	7	54.6	5.3	49
A40 -	50	X	58	X	5	7	58.6	5.3	53
A40 -	50	X	60	X	5	7	60.6	5.3	57.6
A40 -	55	X	63	X	5	7	63.6	5.3	58
A40 -	55	X	65	X	5	7	65.6	5.3	62.6
A40 -	56	X	66	X	5	7	66.6	5.3	63.6
A40 -	56	X	66	X	6.3	8.1	66	6.3	63
A40 -	60	X	68	X	5	7	68.6	5.3	63
A40 -	60	X	70	X	5	7	70.6	5.3	67.6
A40 -	63	X	73	X	6.3	8.1	73	6.3	70
A40 -	65	X	73	X	5	7	73.6	5.3	68
A40 -	65	X	75	X	5	7	75.6	5.3	72.6
A40 -	70	X	78	X	5	7	78.6	5.3	73
A40 -	70	X	80	X	5	7	80.6	5.3	77.6

**Pressure Seals Inc. 81 Commerce Way, South Windsor, CT 06074**

Phone: (877)-PSI-SEAL Toll Free, In CT: (860) 282-9100, Fax: (860) 282-9001



# Pressure Seals, Inc.

Phone: (877)-PSI-SEAL Toll Free  
 Thousands of Seals, O-Rings, and U-Cups  
 World-Class Service since 1976!



## A40 Type Metric Nitrile Wipers Continued

Prefix	Part Number						Groove Dimensions			
	Rod Diameter A (mm)		Outside Diameter D <sub>1</sub> (mm)		Base Height B (mm)		Total Height C (mm)	D (mm) H11	E (mm) +0.1/-0	F (mm) H11
A40 -	70	X	80	X	6.3	X	8.1	80	6.3	77
A40 -	75	X	83	X	5	X	7	83.6	5.3	78
A40 -	80	X	88	X	5	X	7	88.6	5.3	83
A40 -	80	X	90	X	6.3	X	8.1	90	6.3	87
A40 -	80	X	92	X	7	X	12	92.2	7.1	86
A40 -	85	X	93	X	5	X	7	93.6	5.3	88
A40 -	90	X	98	X	5	X	7	98.6	5.3	93
A40 -	90	X	100	X	6.3	X	8.1	100	6.3	97
A40 -	90	X	102	X	7	X	12	102.2	7.1	96
A40 -	95	X	103	X	5	X	7	103.6	5.3	98
A40 -	100	X	108	X	5	X	7	108.6	5.3	103
A40 -	100	X	112	X	7	X	12	112.2	7.1	106
A40 -	100	X	115	X	6.3	X	8.1	115	6.3	112
A40 -	110	X	118	X	5	X	7	118.6	5.3	113
A40 -	110	X	122	X	7	X	12	122.2	7.1	116
A40 -	120	X	132	X	7	X	12	132.2	7.1	126
A40 -	125	X	140	X	10	X	16	140	10.2	132.6
A40 -	130	X	142	X	7	X	12	142.2	7.1	136
A40 -	140	X	152	X	7	X	12	152.2	7.1	146
A40 -	140	X	155	X	10	X	16	155	10.2	147.6
A40 -	143	X	151	X	5	X	7	151.6	5.3	146
A40 -	150	X	165	X	10	X	16	165	10.2	157.6
A40 -	160	X	168	X	5	X	7	168.6	5.3	163
A40 -	160	X	175	X	10	X	16	175	10.2	167.6
A40 -	170	X	182	X	7	X	12	182.2	7.1	176
A40 -	171	X	183	X	7	X	12	183.2	7.1	177
A40 -	180	X	200	X	10	X	18	200	10.2	190
A40 -	200	X	220	X	10	X	18	220	10.2	210
A40 -	220	X	240	X	10	X	18	240	10.2	230
A40 -	240	X	260	X	10	X	18	260	10.2	250
A40 -	250	X	270	X	10	X	18	270	10.2	260
A40 -	265	X	285	X	10	X	18	285	10.2	275

Pressure Seals Inc. 81 Commerce Way, South Windsor, CT 06074

Phone: (877)-PSI-SEAL Toll Free, In CT: (860) 282-9100, Fax: (860) 282-9001