

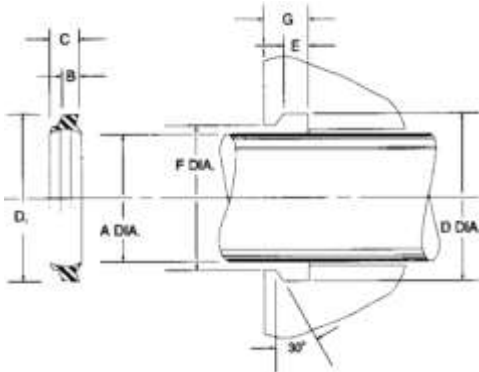


**Pressure Seals, Inc.**

Phone: (877)-PSI-SEAL Toll Free  
Thousands of Seals, O-Rings, and U-Cups  
World-Class Service since 1976!



## 7580 Type Double Lip Nitrile Wipers



7580 type double lip wiper seal rings are one piece snap-in rod wipers made from 80 durometer nitrile. They fit grooves with a 30° tapered top surface. As the external lip scrapes dust and dirt from the rod, the secondary lip traps slight leakage that may pass the rod seal.

Part Number	Wiper Dimensions (In.)		Groove Dimensions (In.)			
	Rod Diameter A	Outside Diameter D <sub>1</sub>	D +.005 -.000	E +.005 -.000	F +.005 -.000	G +.005 -.000
7580-00840	0.500	3/4	0.760	0.155	0.621	0.250
7580-10060	1.000	1 3/8	1.385	0.195	1.077	0.345
7580-10460	1.250	1 5/8	1.635	0.195	1.327	0.345
7580-10860	1.500	1 7/8	1.885	0.195	1.577	0.345
7580-20060	2.000	2 3/8	2.385	0.195	2.077	0.345
7580-20481	2.210	2.710	2.720	0.255	2.362	0.443
7580-20460	2.250	2 5/8	2.635	0.195	2.327	0.345
7580-20781	2.437	3	3.010	0.286	2.633	0.468
7580-20880	2.450	3	3.010	0.286	2.646	0.468
7580-20860	2.500	2 7/8	3.885	0.195	2.577	0.345
7580-20881	2.500	3	3.010	0.255	2.652	0.443
7580-21281	2.750	3 1/4	3.260	0.255	2.902	0.443
7580-30080	2.950	3 1/2	3.510	0.286	3.126	0.468
7580-30061	2.980	3.355	3.365	0.195	3.057	0.345
7580-30381	3.165	3.734	3.744	0.255	3.317	0.443
7580-30880	3.450	4	4.010	0.280	3.646	0.463
7580-30862	3.500	3 7/8	3.885	0.195	3.577	0.345
7580-40080	3.950	4 1/2	4.510	0.280	4.146	0.463
7580-40880	4.450	5	5.010	0.280	4.646	0.463
7580-40881	4.500	5	5.010	0.255	4.652	0.443
7580-41280	4.700	5 1/4	5.260	0.280	4.896	0.463
7580-41581	4.925	5.489	5.499	0.286	5.121	0.468
7580-51280	5.700	6 1/4	6.260	0.280	5.896	0.463
7580-80080	7.950	8 1/2	8.510	0.280	8.146	0.463

**Pressure Seals Inc. 81 Commerce Way, South Windsor, CT 06074**

Phone: (877)-PSI-SEAL Toll Free, In CT: (860) 282-9100, Fax: (860) 282-9001

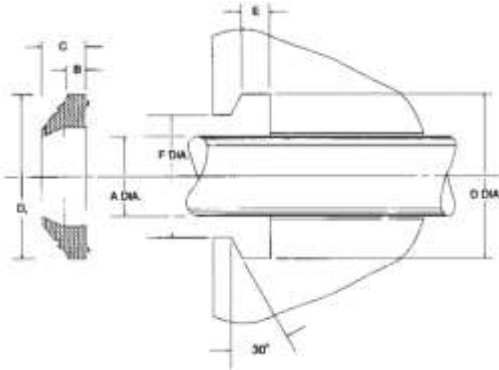


# Pressure Seals, Inc.

Phone: (877)-PSI-SEAL Toll Free  
Thousands of Seals, O-Rings, and U-Cups  
World-Class Service since 1976!



## KB Type Urethane Wipers



KB style wipers resemble a K type wiper but with a single lip and a heavier base. They do not interchange grooves. Standard material is 94 durometer polyurethane.

Part Number	Wiper Dimensions (In.)		Groove Dimensions (In.)		
	Rod Diameter	Outside Diameter	D	E	F
	A	D <sub>1</sub>	+0.005 -0.005	+0.005 -0.005	+0.005 -0.005
KB-1000	1.000	1 1/2	1.500	0.208	1.250
KB-1125	1.125	1 5/8	1.625	0.208	1.375
KB-1250	1.250	1 3/4	1.750	0.208	1.500
KB-1500	1.500	2	2.000	0.208	1.750
KB-1750	1.750	2 1/4	2.250	0.208	2.000
KB-2000	2.000	2 1/2	2.500	0.208	2.250
KB-2125	2.125	2 5/8	2.625	0.208	2.375

## Wiper Nitrile Cord

This 70 durometer nitrile extrusion is available in 3 cross sections for those non-standard rod applications and will interchange into standard K and 7580 wiper grooves.

Part Number	Cross Section
156KCORD N70	5/32"
187KCORD N70	3/16"
250KCORD N70	1/4"

Pressure Seals Inc. 81 Commerce Way, South Windsor, CT 06074

Phone: (877)-PSI-SEAL Toll Free, In CT: (860) 282-9100, Fax: (860) 282-9001