

Pressure Seals, Inc.

Phone: (877)-PSI-SEAL Toll Free
Thousands of Seals, O-Rings, and U-Cups
World-Class Service since 1976!

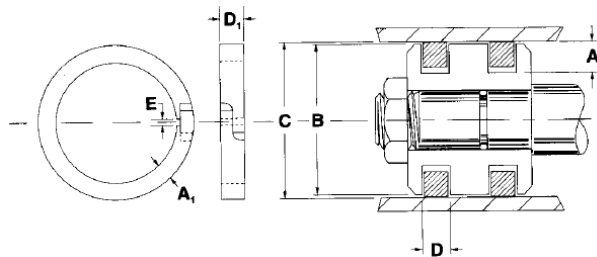


5 Piece Metric Piston Seals, cont'd.

Part Number	Bore Dia. D mm H10	Groove		Bearing Width E mm +0.1 -0.0	Overall Width G mm	Piston Dia. C mm H11	Bearing Groove Dia B mm H9	Price
		Dia. A mm H9	Width F mm. +0.35 +0.1					
DAS11085	110	85	22.4	6.35	35.1	103.1	108	
DAS11092	110	92	22.5	3.6	29.7	106	109	
DAS11096	110	96	22.5	5.2	32.9	106	109.4	
DAS11590	115	90	22.4	6.35	35.1	108.1	113	
DAS11597	115	97	22.5	3.6	29.7	111	114	
DAS12095	120	95	22.4	6.35	35.1	113.1	118	
DAS120106	120	106	22.5	5.2	32.9	116	119.4	
DAS125100	125	100	25.4	6.35	38.1	118.1	123	
DAS125103	125	103	26.5	5.1	36.7	121	124	

Part Number	Bore Dia. D mm H10	Groove		Bearing Width E mm +0.1 -0.0	Overall Width G mm	Piston Dia. C mm H11	Bearing Groove Dia B mm H9	Price
		Dia. A mm H9	Width F mm. +0.35 +0.1					
DAS125108	125	108	26.5	7.2	40.9	121	124.4	
DAS130105	130	105	25.4	9.5	44.4	122.6	127.5	
DAS135110	135	110	25.4	9.5	44.4	127.6	132.5	
DAS140115	140	115	25.4	9.5	44.4	132.6	137.5	
DAS150125	150	125	25.4	9.5	44.4	142.6	147.5	
DAS155130	155	130	25.4	9.5	44.4	147.6	152.5	
DAS160135	160	135	25.4	9.5	44.4	152.6	157.5	
DAS175150	175	150	25.4	12.7	50.8	166.7	172.1	
DAS200175	200	175	25.4	12.7	50.8	191.6	197	

Cast Iron Piston Rings



Cast iron piston rings are used in applications requiring high temperatures, port passing capabilities or high pressure.

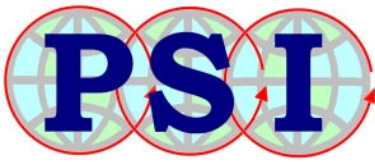
Typical applications require at least 3 rings but are sometimes used in conjunction with TFE seals.

Part Number	Bore Dia. C	Ring Width D1	Groove Width D +.003 -0.000	Max Well A1	Groove Depth A +.000 -0.003	Joint Clearance E	Price
PR15000936067P	1.500	3/32	.0940	0.067	0.107	0.005/0.015	
PR1500125C067P	1.500	1/8	.1255	0.067	0.107	0.005/0.015	
PR1750125C075P	1.750	1/8	.1255	0.075	0.120	0.005/0.015	
PR2000093C075P	2.000	3/32	.0940	0.075	0.125	0.005/0.015	
PR2000125C075P	2.000	1/8	.1255	0.075	0.125	0.005/0.015	
PR2000156C075P	2.000	5/32	.1555	0.075	0.125	0.005/0.015	
PR2000187C075P	2.000	3/16	.188	0.075	0.125	0.005/0.015	
PR2000250C062P	2.000	1/4	.2505	0.062	0.112	0.005/0.015	
PR2000250C075P	2.000	1/4	.2505	0.075	0.125	0.005/0.015	
PR2250093C085P	2.250	3/32	.0940	0.085	0.135	0.005/0.015	
PR2250125C085P	2.250	1/8	.1255	0.085	0.135	0.005/0.015	
PR2250187C085P	2.250	3/16	.188	0.085	0.135	0.005/0.015	
PR2375187C091P	2.375	3/16	.188	0.091	0.135	0.005/0.015	
PR2500093C097P	2.500	3/32	.0940	0.097	0.141	0.005/0.015	
PR2500125C097P	2.500	1/8	.1255	0.097	0.147	0.005/0.015	
PR2500187C097P	2.500	3/16	.188	0.097	0.147	0.005/0.015	
PR2500250C097P	2.500	1/4	.2505	0.097	0.147	0.005/0.015	
PR2625125C102P	2.625	1/8	.1255	0.102	0.152	0.005/0.015	
PR2625187C102P	2.625	3/16	.188	0.102	0.152	0.005/0.015	
PR2750125C106P	2.750	1/8	.1255	0.106	0.156	0.005/0.015	
PR2750156C106P	2.750	5/32	.1555	0.106	0.156	0.005/0.015	
PR2750187C106P	2.750	3/16	.188	0.106	0.156	0.005/0.015	
PR2750250C106P	2.750	1/4	.2505	0.106	0.156	0.005/0.015	
PR2875187C108P	2.875	3/16	.188	0.106	0.158	0.005/0.015	
PR3000093C110P	3.000	3/32	.0940	0.110	0.160	0.005/0.015	
PR3000125C110P	3.000	1/8	.1255	0.110	0.160	0.005/0.015	
PR3000187C110P	3.000	3/16	.188	0.110	0.160	0.005/0.015	
PR3000250C110P	3.000	1/4	.2505	0.110	0.160	0.005/0.015	

Part Number	Bore Dia. C	Ring Width D1	Groove Width D +.003 -0.000	Max Well A1	Groove Depth A +.000 -0.003	Joint Clearance E	Price
PR3000312C110P	3.000	5/16	.313	0.110	0.160	0.005/0.015	
PR3187125C117P	3.187	1/8	.1255	0.117	0.167	0.005/0.015	
PR3250125C118P	3.250	1/8	.1255	0.118	0.168	0.005/0.015	
PR3250187C118P	3.250	3/16	.188	0.118	0.168	0.005/0.015	
PR3375125C140P	3.375	1/8	.1255	0.140	0.190	0.005/0.015	
PR3375187C124P	3.375	3/16	.188	0.124	0.171	0.005/0.015	
PR3500125C124P	3.500	1/8	.1255	0.124	0.176	0.005/0.015	
PR3500187C124P	3.500	3/16	.188	0.124	0.176	0.005/0.015	
PR3500250C124P	3.500	1/4	.2505	0.124	0.176	0.005/0.015	
PR3500312C124P	3.500	5/16	.313	0.124	0.176	0.005/0.015	
PR3750125C130P	3.750	1/8	.1255	0.130	0.176	0.005/0.015	
PR3750187C130P	3.750	3/16	.188	0.130	0.185	0.005/0.015	
PR3750250C102P	3.750	1/4	.2505	0.102	0.185	0.005/0.015	
PR3750250C130P	3.750	1/4	.2505	0.130	0.157	0.005/0.015	
PR4000125142P	4.000	1/8	.1255	0.142	0.185	0.005/0.015	
PR4000187C142P	4.000	3/16	.188	0.142	0.194	0.005/0.015	
PR4000250C142P	4.000	1/4	.2505	0.142	0.194	0.005/0.015	
PR4000312C142P	4.000	5/16	.313	0.142	0.194	0.005/0.015	
PR4250187C150P	4.250	3/16	.188	0.150	0.203	0.005/0.015	
PR4250250C150P	4.250	1/4	.2505	0.150	0.203	0.005/0.015	
PR4500125C160P	4.500	1/8	.1255	0.160	0.213	0.005/0.015	
PR4500187C160P	4.500	3/16	.188	0.160	0.213	0.005/0.015	
PR4500250C160P	4.500	1/4	.2505	0.160	0.213	0.005/0.015	
PR4500312C155P	4.500	5/16	.313	0.155	0.213	0.005/0.015	
PR4750250C167P	4.750	1/4	.2505	0.167	0.221	0.005/0.015	
PR4750375C175P	4.750	3/8	.3755	0.175	0.230	0.005/0.015	
PR5000187C175P	5.000	3/16	.188	0.175	0.230	0.005/0.015	
PR5000250C175P	5.000	1/4	.2505	0.175	0.230	0.005/0.015	

Pressure Seals Inc. 81 Commerce Way, South Windsor, CT 06074

Phone: (877)-PSI-SEAL Toll Free, In CT: (860) 282-9100, Fax: (860) 282-9001



Pressure Seals, Inc.

Phone: (877)-PSI-SEAL Toll Free

Thousands of Seals, O-Rings, and U-Cups
World-Class Service since 1976!



Cast Iron Piston Rings cont'd

Part Number	Bore Dia. C	Ring Width D ₁	Groove Width D +.003 -.000	Max Well A ₁	Groove Depth A +.000 -.003	Joint Clearance E	Price
PR5000312C175P	5.000	5/16	.313	0.175	0.230	0.010/0.020	
PR5000315C175P	5.000	3/8	.3755	0.175	0.230	0.010/0.020	
PR5250187C181P	5.250	3/16	.188	0.181	0.234	0.010/0.020	
PR5250250C181P	5.250	¼	.2505	0.181	0.234	0.010/0.020	
PR5250312C181P	5.250	5/16	.313	0.181	0.234	0.010/0.020	
PR5500125C190P	5.500	1/8	.1255	0.190	0.240	0.010/0.020	
PR5500187C190P	5.500	3/16	.188	0.190	0.240	0.010/0.020	
PR5500250C190P	5.500	¼	.2505	0.190	0.240	0.010/0.020	
PR5500312C190P	5.500	5/16	.313	0.190	0.240	0.010/0.020	
PR5625187C205P	5.625	3/16	.188	0.205	0.257	0.010/0.020	
PR5750125C214P	5.750	1/8	.1255	0.214	0.258	0.010/0.020	
PR5750187C214P	5.750	3/16	.188	0.214	0.258	0.010/0.020	
PR5750250C145P	5.750	¼	.2505	0.145	0.208	0.010/0.020	
PR5750312C199P	5.750	5/16	.313	0.199	0.249	0.010/0.020	
PR6000187C206P	6.000	3/16	.188	0.206	0.256	0.010/0.020	
PR6000250C206P	6.000	¼	.2505	0.206	0.256	0.010/0.020	
PR6000312C206P	6.000	5/16	.313	0.206	0.256	0.010/0.020	
PR6000375C200P	6.000	3/8	.3755	0.200	0.250	0.010/0.020	
PR6000500C206P	6.000	½	.5005	0.206	0.256	0.010/0.020	
PR6156312C217P	6.250	5/16	.313	0.217	0.258	0.010/0.020	
PR6250187C217P	6.250	3/16	.188	0.217	0.258	0.010/0.020	
PR6250250C217P	6.250	5/16	.2505	0.217	0.258	0.010/0.020	
PR6250312C217P	6.250	5/16	.313	0.217	0.258	0.010/0.020	
PR6500187C226P	6.500	3/16	.188	0.226	0.276	0.010/0.020	
PR6500250C226P	6.500	¼	.2505	0.226	0.276	0.010/0.020	
PR6500312C185P	6.500	5/16	.313	0.185	0.235	0.010/0.020	
PR6750250C234P	6.750	¼	.2505	0.243	0.284	0.010/0.020	
PR6750312C240P	6.750	5/16	.313	0.243	0.290	0.010/0.020	
PR7000187C243P	7.000	3/16	.188	0.243	0.293	0.010/0.020	
PR7000250C243P	7.000	¼	.2505	0.190	0.293	0.010/0.020	
PR7000312C243P	7.000	5/16	.313	0.233	0.293	0.010/0.020	
PR7000375C190P	7.000	3/8	.3755	0.243	0.240	0.010/0.020	
PR7000500C233P	7.000	½	.5005	0.190	0.283	0.010/0.020	
PR7156312C243P	7.156	5/16	.313	0.243	0.293	0.010/0.020	
PR7250187C255P	7.250	3/16	.188	0.255	0.305	0.010/0.020	
PR7250250C252P	7.250	¼	.2505	0.252	0.302	0.010/0.020	
PR7250312C252P	7.250	5/16	.313	0.252	0.302	0.010/0.020	

Part Number	Bore Dia. C	Ring Width D ₁	Groove Width D +.003 -.000	Max Well A ₁	Groove Depth A +.000 -.003	Joint Clearance E	Price
PR7500187C259P	7.500	3/16	.188	0.259	0.309	0.010/0.020	
PR7500250C259P	7.500	¼	.2505	0.259	0.309	0.010/0.020	
PR7500312C170P	7.500	5/16	.313	0.170	0.225	0.010/0.020	
PR7500312C259P	7.500	5/16	.313	0.259	0.309	0.010/0.020	
PR7740312C244P	7.740	5/16	.313	0.244	0.294	0.010/0.020	
PR7750250C267P	7.500	¼	.2505	0.267	0.307	0.010/0.020	
PR7750312C267P	7.500	5/16	.313	0.267	0.307	0.010/0.020	
PR7937312C250P	7.937	5/16	.313	0.250	0.300	0.010/0.020	
PR8000250C275P	8.000	¼	.2505	0.275	0.325	0.010/0.020	
PR8000312C275P	8.000	5/16	.313	0.275	0.325	0.010/0.020	
PR8000375C275P	8.000	3/8	.3755	0.275	0.325	0.010/0.020	
PR8000437C295P	8.000	7/16	.438	0.295	0.333	0.010/0.020	
PR8250250C283P	8.250	¼	.2505	0.283	0.321	0.010/0.020	
PR8437250C286P	8.437	¼	.313	0.286	0.321	0.010/0.020	
PR8500187C290P	8.500	3/16	.313	0.290	0.340	0.010/0.020	
PR8500250C290P	8.500	¼	.3755	0.290	0.340	0.010/0.020	
PR8500312C185P	8.500	5/16	.1255	0.185	0.247	0.010/0.020	
PR8500312C290P	8.500	5/16	.2505	0.290	0.340	0.010/0.020	
PR8500375C290P	8.500	3/8	.313	0.290	0.340	0.010/0.020	
PR9000125C309P	9.000	1/8	.3755	0.309	0.359	0.010/0.020	
PR9000250C309P	9.000	¼	.5005	0.309	0.359	0.010/0.020	
PR9000312C309P	9.000	5/16	.313	0.309	0.359	0.010/0.020	
PR9000375C309P	9.000	3/8	.3755	0.309	0.359	0.010/0.020	
PR9000500C191P	9.000	½	.5005	0.191	0.359	0.010/0.020	
PR9170312C308P	9.170	5/16	.313	0.308	0.241	0.010/0.020	
PR9170375C308P	9.170	3/8	.3755	0.308	0.358	0.010/0.020	
PR9500312C330P	9.500	5/16	.313	0.330	0.380	0.010/0.020	
PR9500375C320P	9.500	3/8	.3755	0.320	0.370	0.010/0.020	
PR9750250C305P	9.750	¼	.2505	0.305	0.354	0.010/0.020	
PR10000375C332P	10.000	3/8	.3755	0.332	0.382	0.010/0.020	
PR10500250C341P	10.500	¼	.2505	0.341	0.405	0.010/0.020	
PR10500375C335P	10.500	3/8	.3755	0.335	0.399	0.010/0.020	
PR11000375C358P	11.000	3/8	.3755	0.358	0.420	0.010/0.020	
PR11000500C191P	11.000	½	.5005	0.191	0.241	0.010/0.020	
PR11000500C358P	11.000	½	.5005	0.385	0.420	0.010/0.020	
PR12000375C401P	12.000	3/8	.3755	0.401	0.446	0.010/0.020	
PR12000500C421S	12.000	¼	.5005	0.421	0.466	0.010/0.020	

Pressure Seals Inc. 81 Commerce Way, South Windsor, CT 06074

Phone: (877)-PSI-SEAL Toll Free, In CT: (860) 282-9100, Fax: (860) 282-9001